

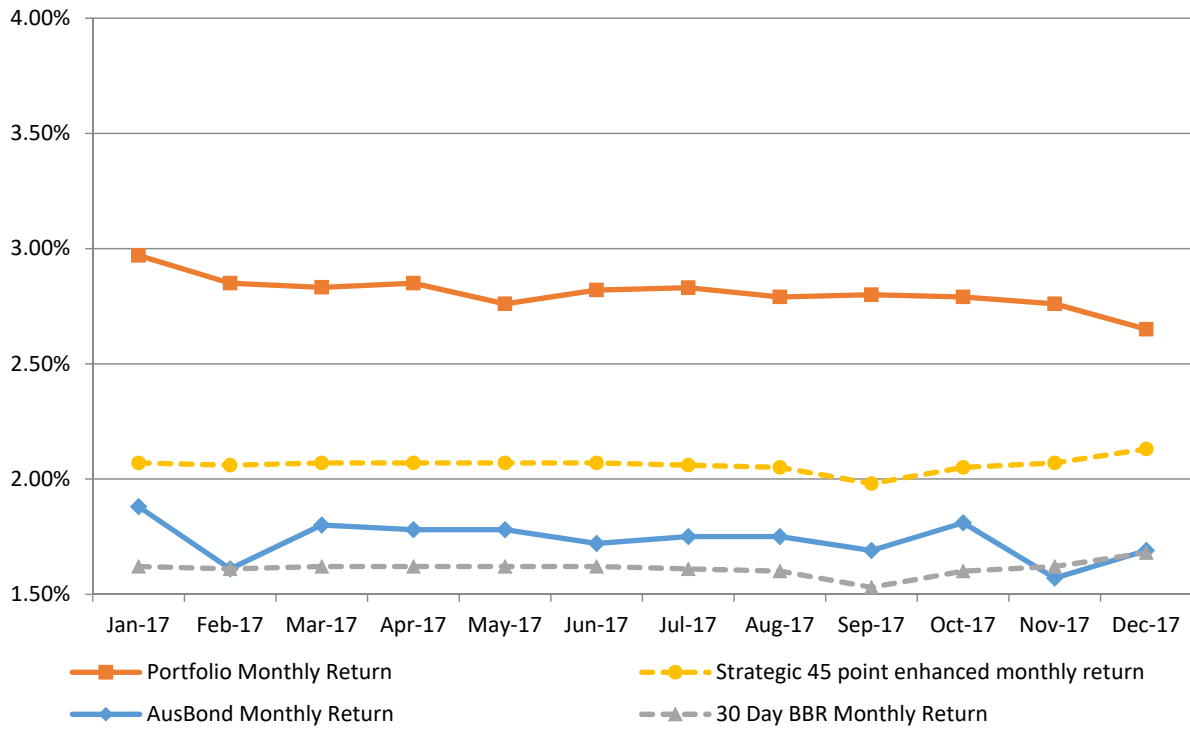
ATTACHMENT B

ATTACHMENT B

**INVESTMENT PERFORMANCE
AS AT 31 DECEMBER 2017**

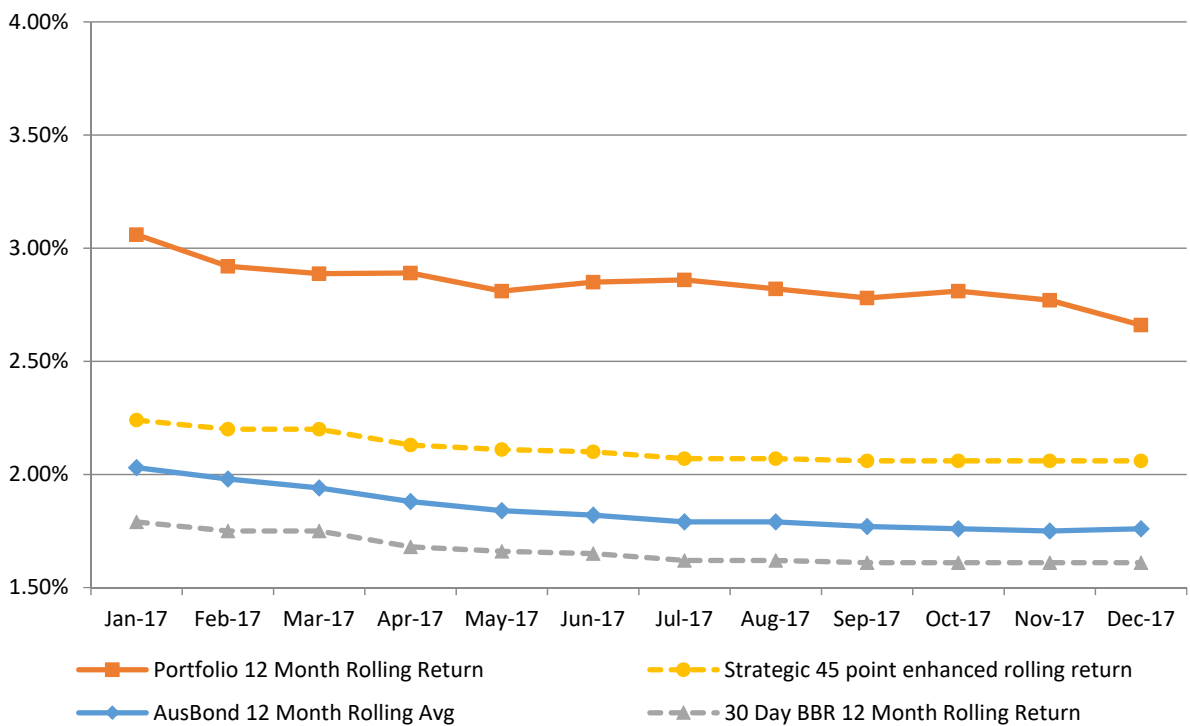
Monthly Results

Actual Portfolio vs Strategic Enhanced Benchmark vs AusBond Benchmark vs 30 Day BBR Benchmark
December 2017

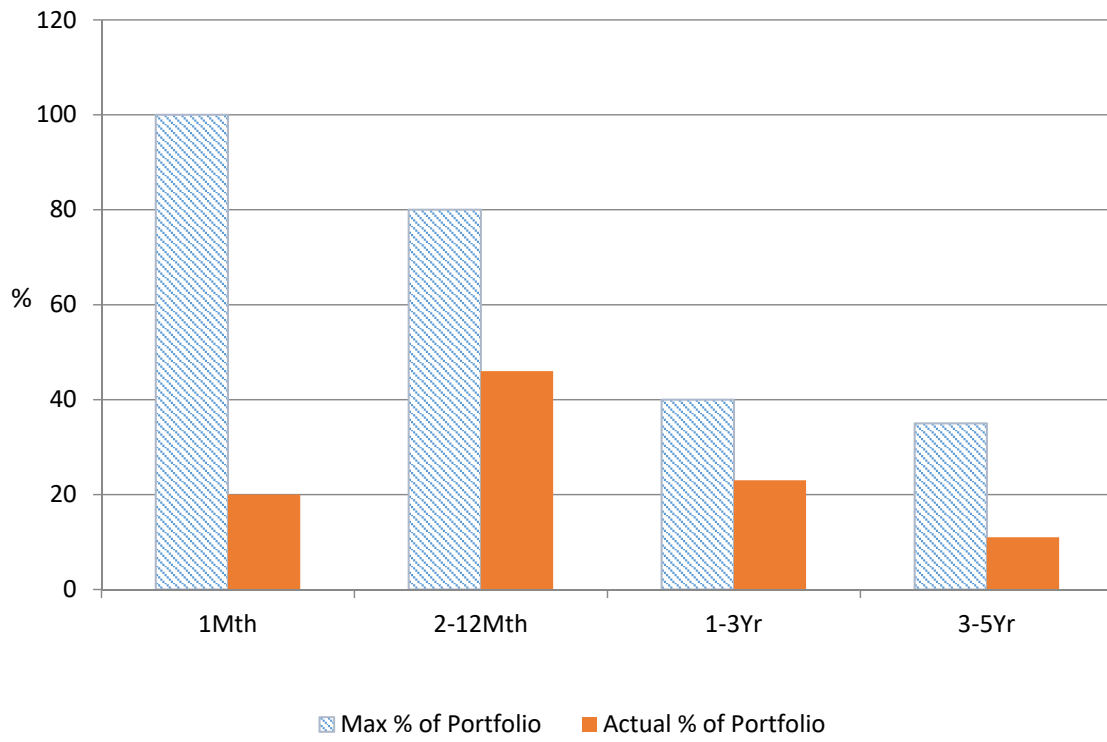


12 Month Rolling Averages

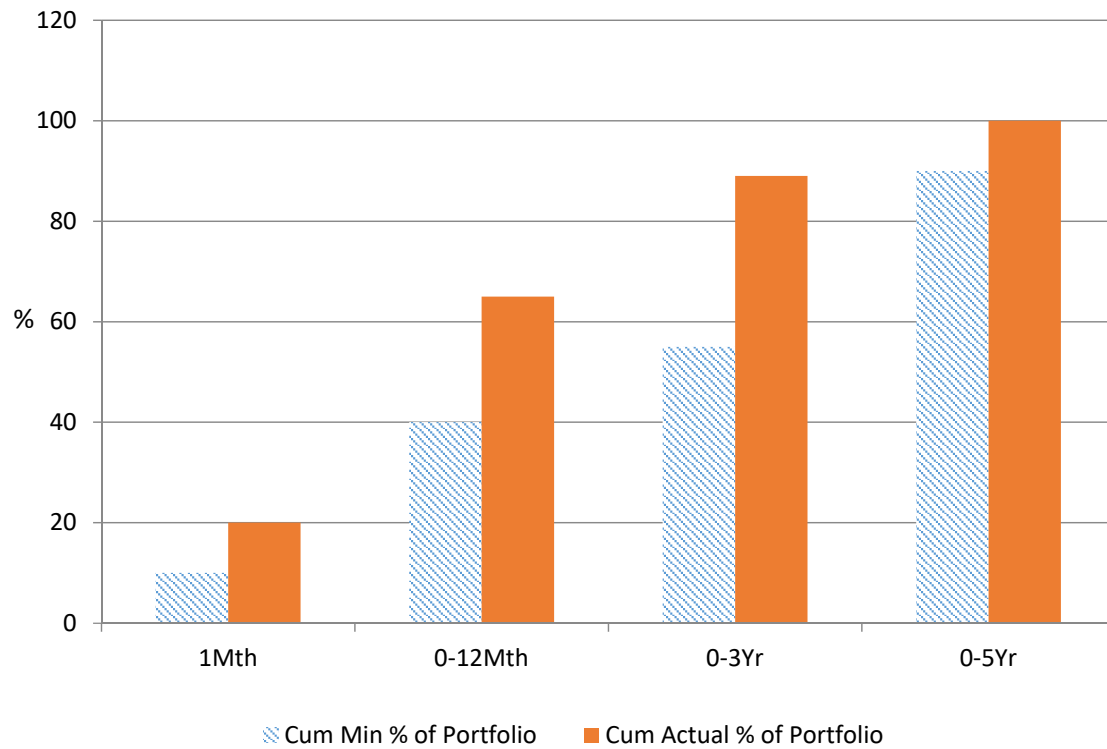
Actual Portfolio vs Strategic Enhanced Benchmark vs AusBond Benchmark vs 30 Day BBR Benchmark
December 2017



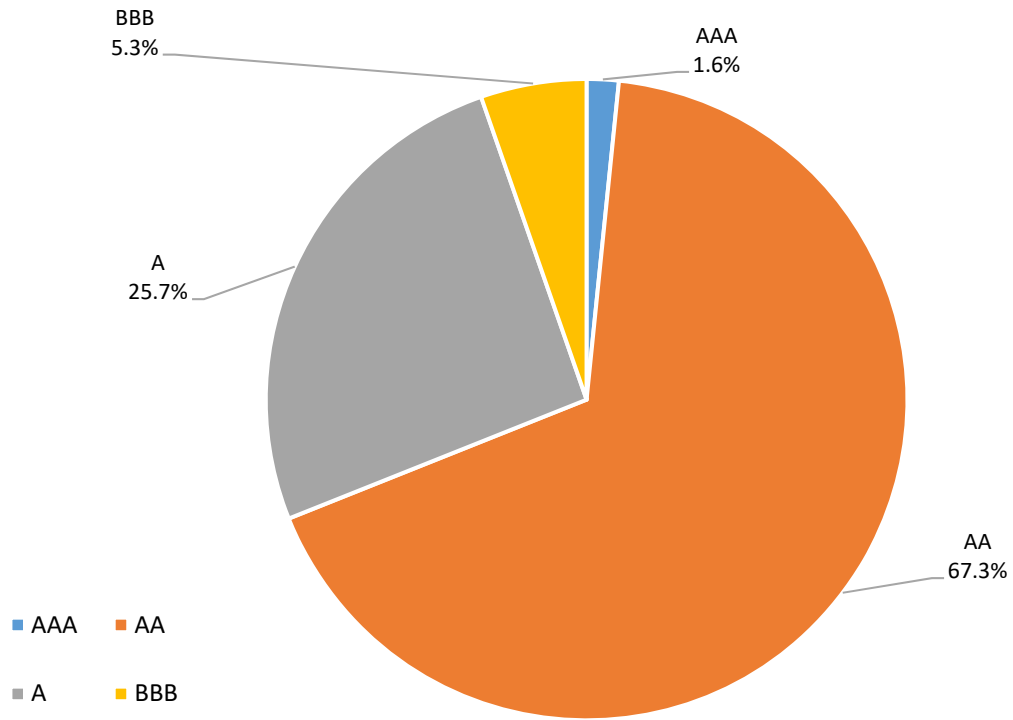
% Liquidity - Maximum Allowances



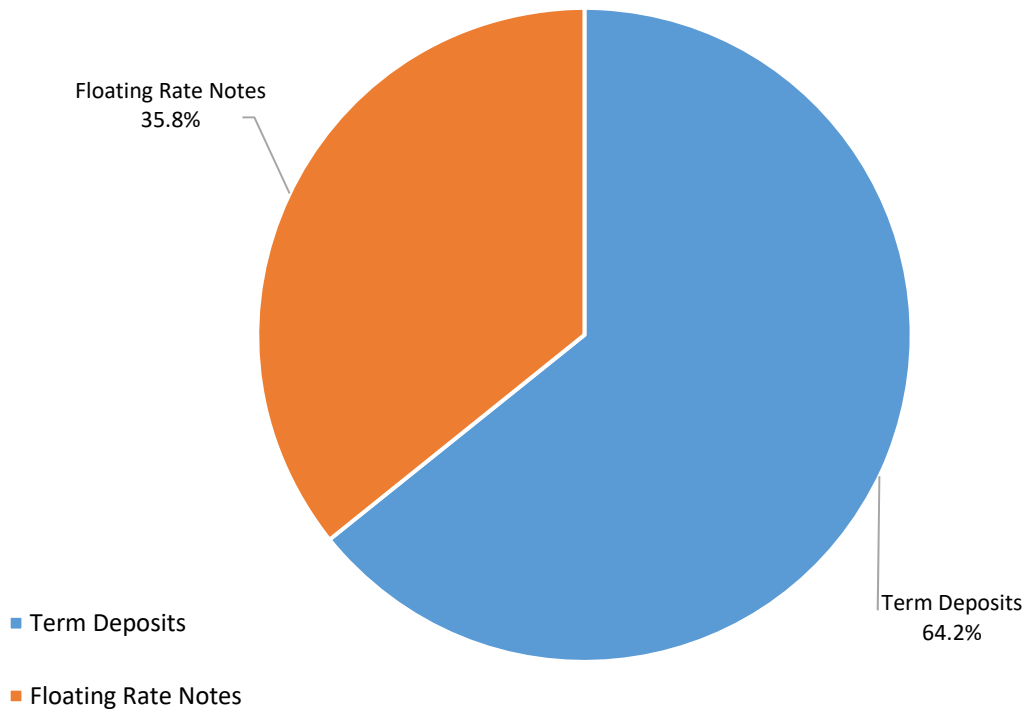
% Liquidity - Minimum Allocations



Risk Profile as at 31 December 2017



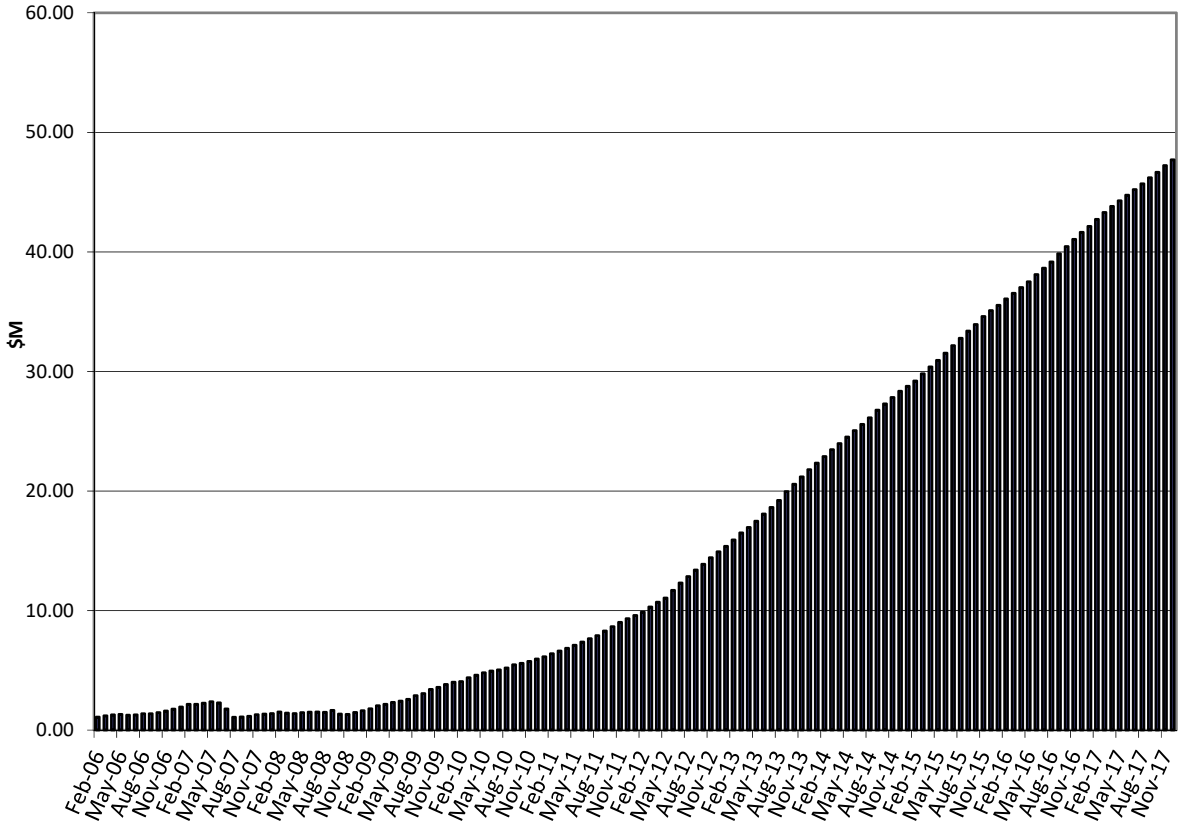
Investment Product Profile as at 31 December 2017



INVESTMENT AND CASH DISTRIBUTION BY FINANCIAL INSTITUTION
AS AT 31 DECEMBER 2017

Institution Category	Financial Institution	Amount \$M	Financial Inst. %	Institution Cat. %
Australian Big 4 Bank (and related institutions)	ANZ Bank	30.0	5.3	
	Commonwealth Bank-related:	168.6	28.2	
	<i>Bankwest</i>	<i>85.0</i>	<i>14.2</i>	
	<i>Commonwealth Bank</i>	<i>83.6</i>	<i>14.0</i>	
	National Australia Bank	70.0	11.7	
	Westpac Banking Corporation	140.5	23.5	
Big 4 Total		409.1		68.4
Other Australian ADIs and Australian subsidiaries of foreign institutions	AMP Bank Ltd	10.0	1.7	
	Bank of China-Sydney Branch	5.0	0.8	
	Bank Of Queensland	45.0	5.8	
	Bendigo and Adelaide Bank	21.0	3.5	
	CUA Limited	30.0	5.0	
	Greater Bank	5.0	0.8	
	IMB	5.0	0.8	
	Members Equity Bank	34.0	5.7	
	Newcastle Permanent Building Society	17.0	2.8	
	Royal Bank of Canada - Sydney	9.5	1.6	
	Suncorp Bank	17.5	2.9	
Other ADI Total		189.3		31.6
Grand Total		598.4	100.0	100.0

Cumulative Outperformance over AusBond Benchmark - 2006-2017



Cumulative Outperformance over 30 Day BBR Benchmark - 2006-2017

